




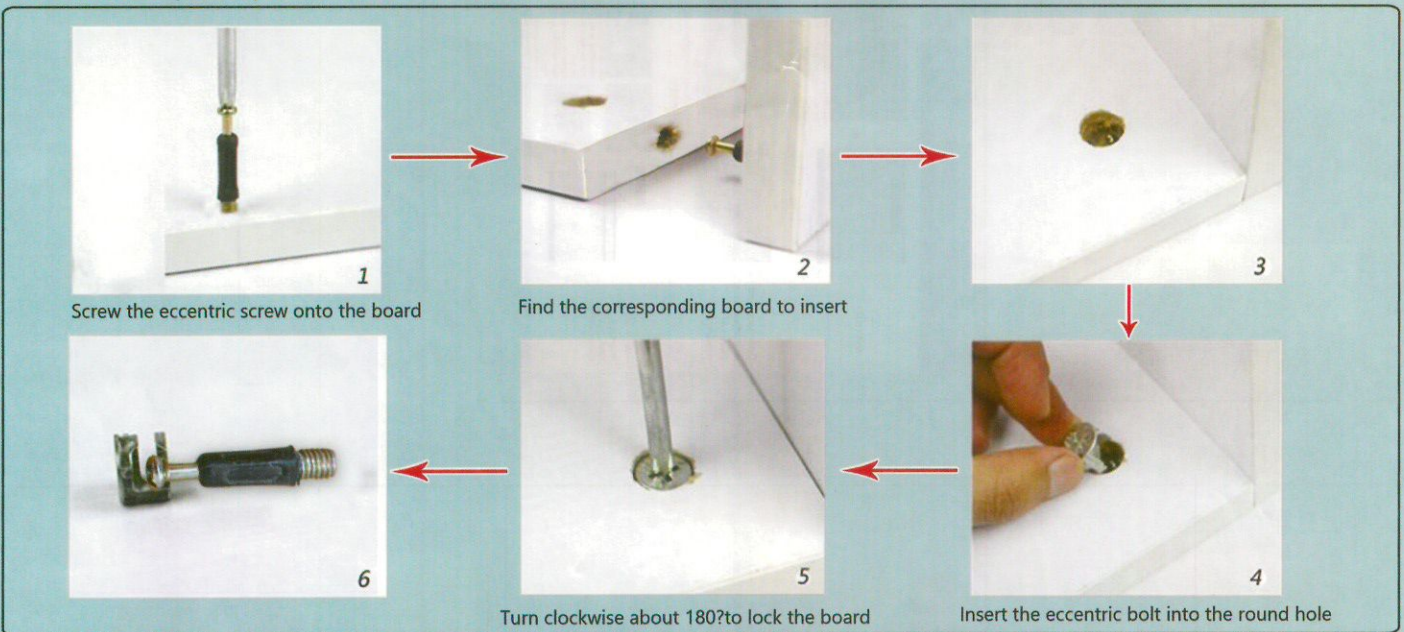


M018A horizontal

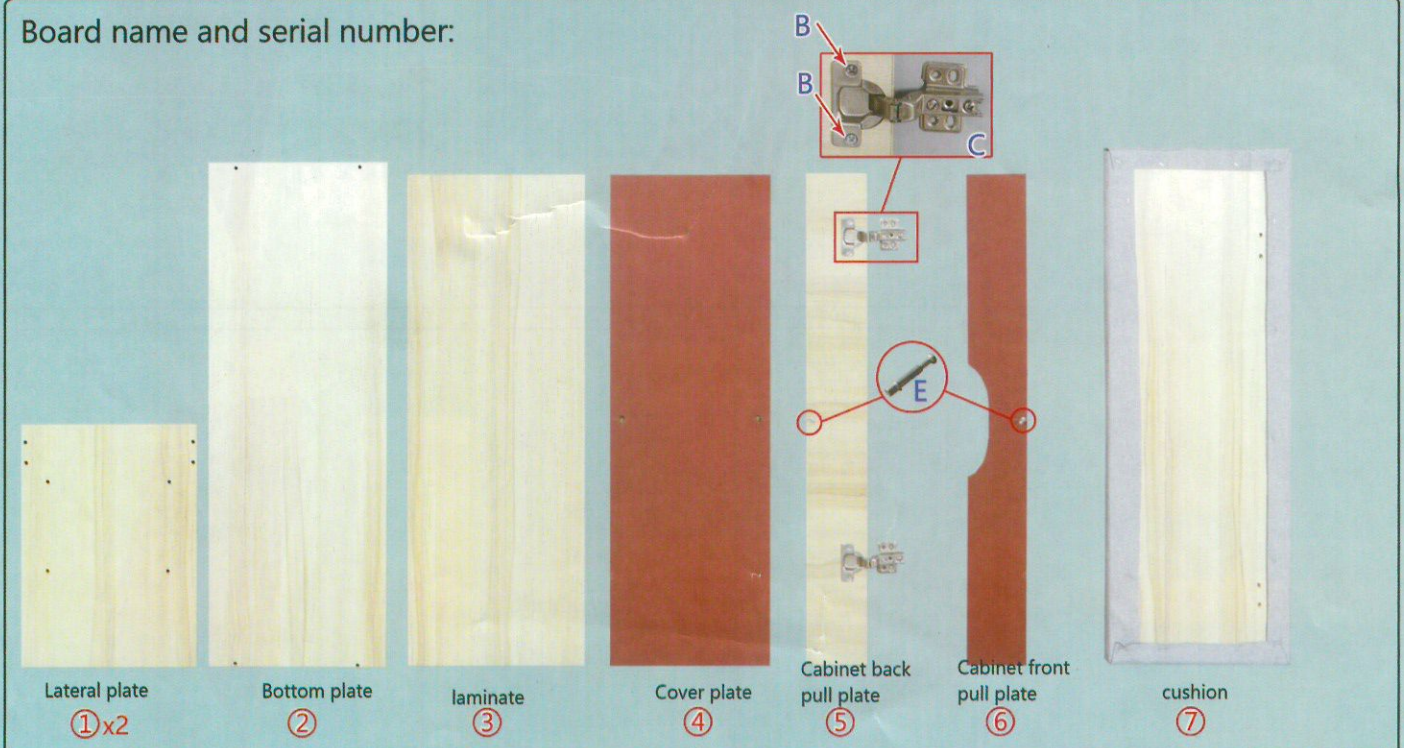
					
3.5CM self-tapping screws	Minimum self-tapping screws	hinge	tack	Eccentric screw	Eccentric bolt
A*20	B*12	C*2	D*4	E*2	F*2

Warm reminder:
When installing the screws, turn seven points tight, and then tighten after all completed!

Installation principle of eccentric parts



Board name and serial number:



Step 1: Complete partial installation

<1>

Screw forward

<2>

Rotate the eccentricity clockwise
The bolt locks the board

<3>

<4>

<5>

<6> Straighten the whole thing out

All landowners
The location of the hinge is marked on the board by a needle eye.
Secure with minimal self-tapping screws
Screw on the two screws first, and wait until the board is adjusted
Screw in all screws again

Door panel adjustment

overslit

Adjustment in the figure, the right panel is by the screwdriver in the adjustment cabinet. The door moves left and right and rotates clockwise to adjust the door panel. Moving in the middle.

Door panel and side panel Excessive clearance

Loosen the screws pointing the screwdriver to touch the door panel in or out, and then tighten to solve this problem.

Height of door panel Low unevenness

Loosen the screws pointed by the screwdriver, as shown in the figure. Push the higher door panels and hinges up, and Tighten the screws. Push the higher door panels and hinges down, and Tighten the screws.

<7> Installation complete