


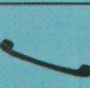





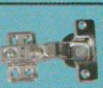


FUR-1707 Installation diagram of file cabinet

									
Eccentric screw	Eccentric bolt	3.5CM self tapping screw	handle	Handle screw	Minimum self tapping screw	wheel	Lockable wheels	wheel	Hinge page
A*4	B*4	C*16	D*1	E*2	F*28	G*2	H*2	I*20	J*2

Eccentric installation principle

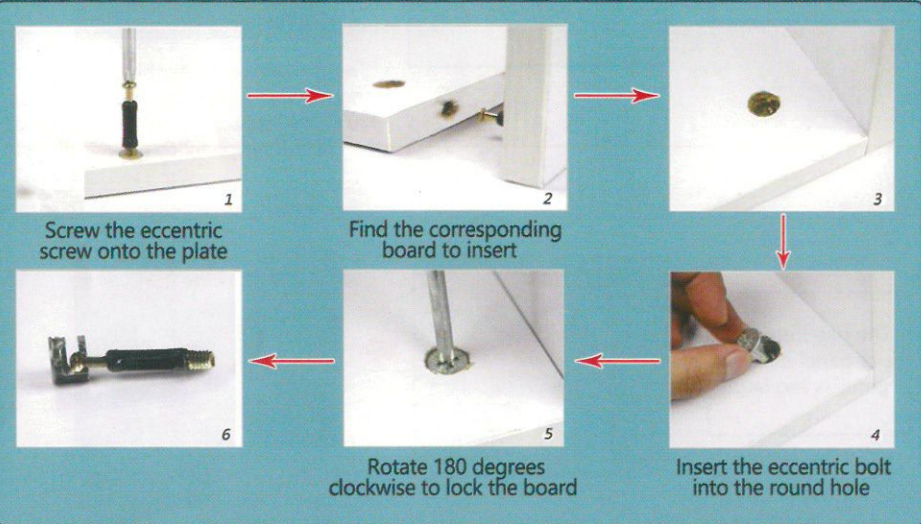
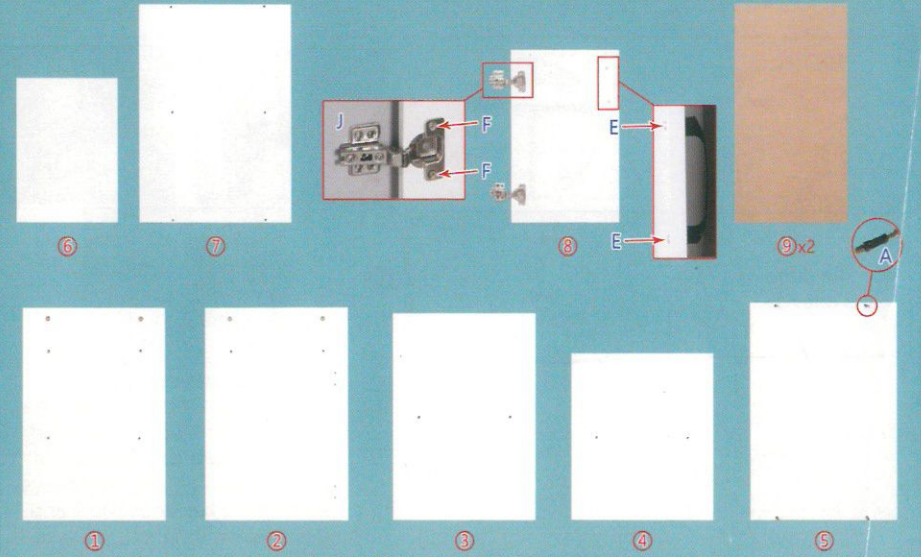
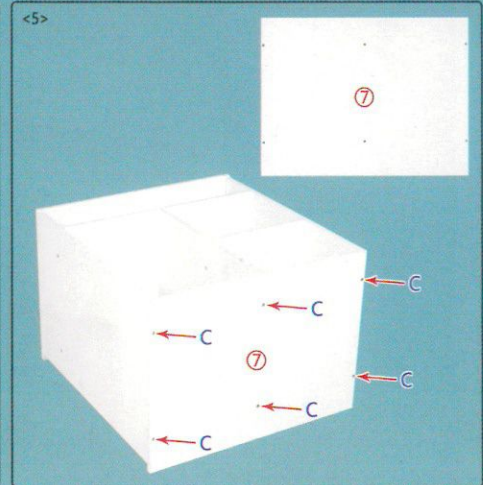
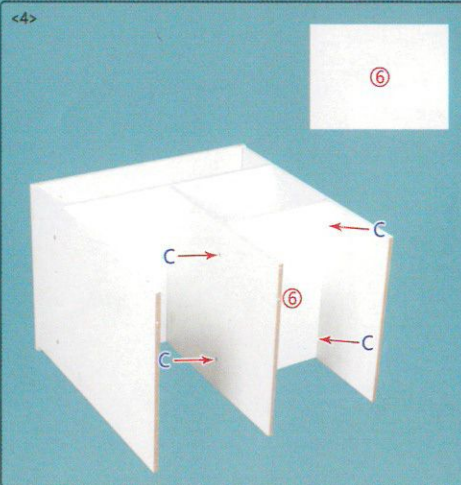
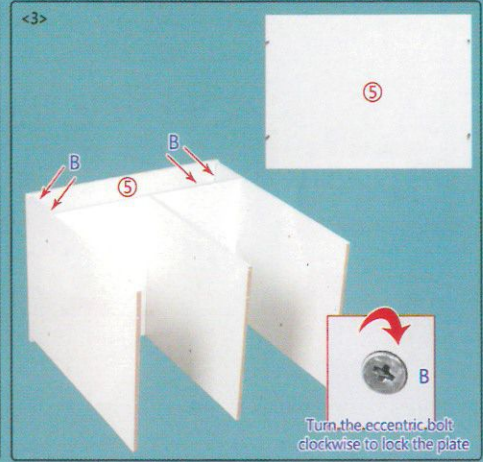
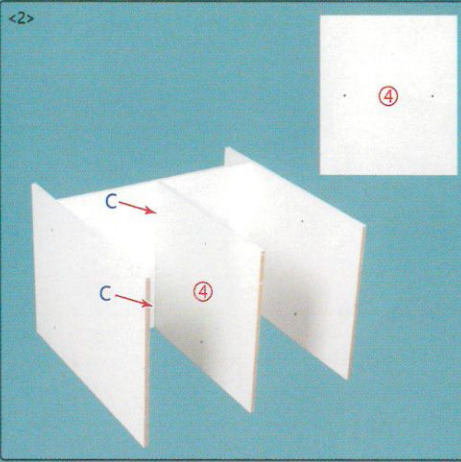
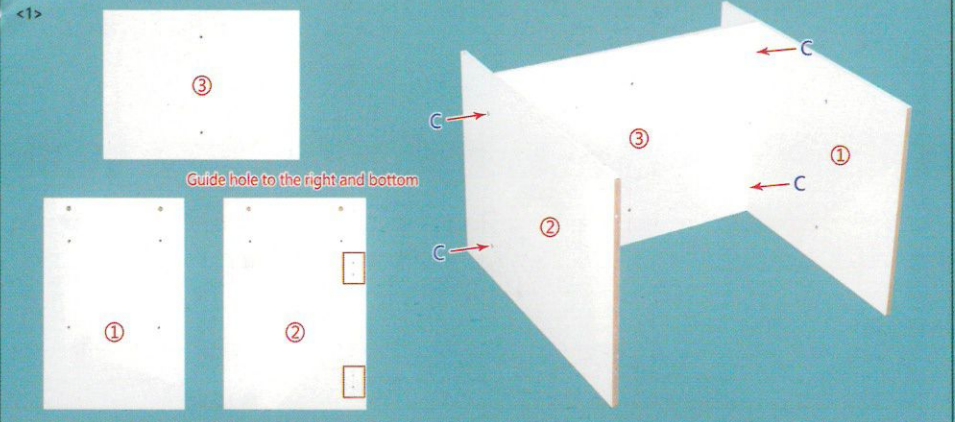


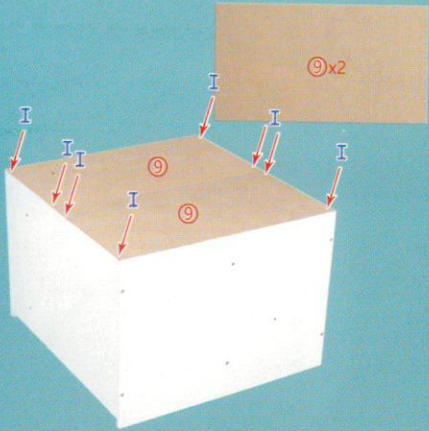
Plate part



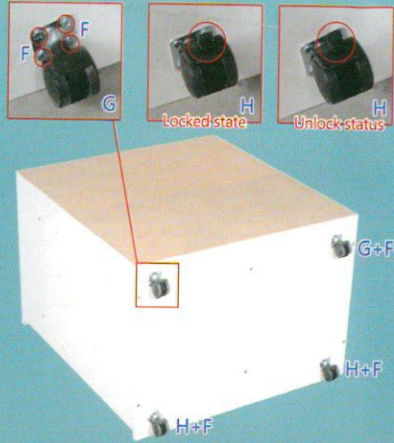
Step 1: Overall Part Installation



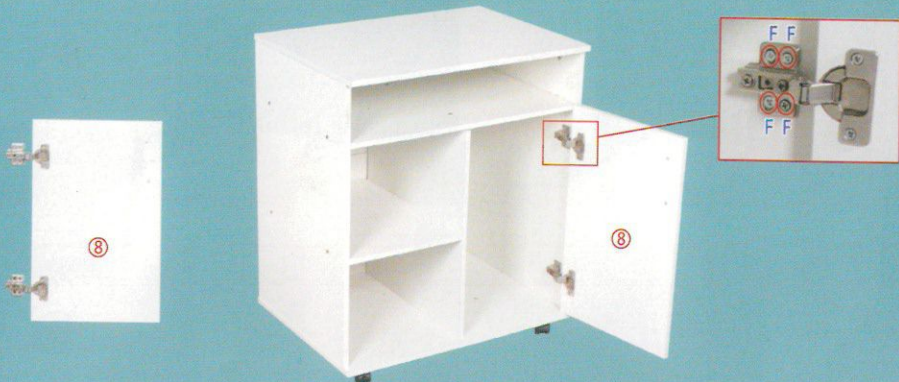
<6>



<7>



<8>

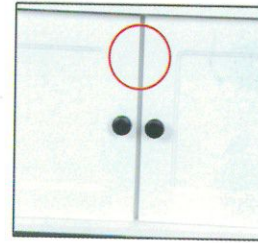


<9>



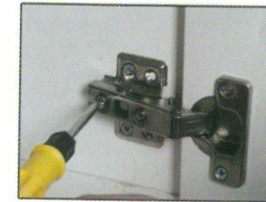
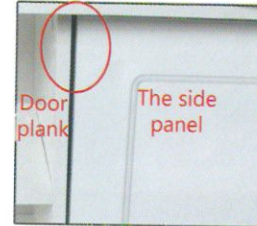
Door plank of adjustment

The crack of the door is too large



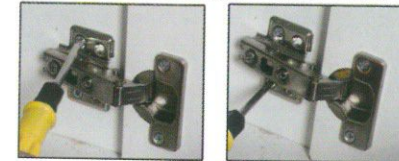
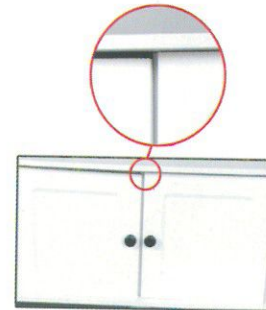
As shown, the screw the screwdriver points to, it moves the door from side to side. Clockwise rotation is to adjust the door panel to the middle.

The gap between door panel and side panel is too large



As shown in the figure, loosen the screw pointed by the screwdriver, push the door panel in or out and tighten it. Solve the above problems.

The door is uneven



As shown in the figure, loosen the screw pointed by the screwdriver, push the lower door panel and hinges up and tighten the screws. Push the higher door panel and hinges down and tighten the screws.